

Exclusively for Women



LIVLIT

Community Living

THE HERMITAGE

Fort, Mumbai

About Us



The Livlit is a premier co-living space with state-of-the-art properties across Mumbai.

Our accommodation is perfectly distant from most colleges and business districts located in Mumbai, whilst also giving you a certain amount of calm in this ever-bustling city.

Livlit is a place where you can socialise, unwind and live in comfort within a thriving youth community.



Ready to
move-in



Transparent
Policies



Secure
Location



Sense of
Community



Proper
Hygiene



The Hermitage

Inspired by the rich heritage and architectural charm of Bombay, The Hermitage is a vintage six-storey featuring a rooftop terrace and a dedicated dining zone with breathtaking views of the city

Room Amenities



Bed



Cupboard



Air Conditioner



Wifi



En-suite
Bathroom



In-room
refrigerator





The Dining Room

Cafeteria

The dining room is a warm and inviting space designed for both intimate meals and lively gatherings.

Amenities



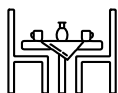
Wifi



CCTV Camera



Air Conditioner



Dinning Table



Work Stations





Twin Sharing Room





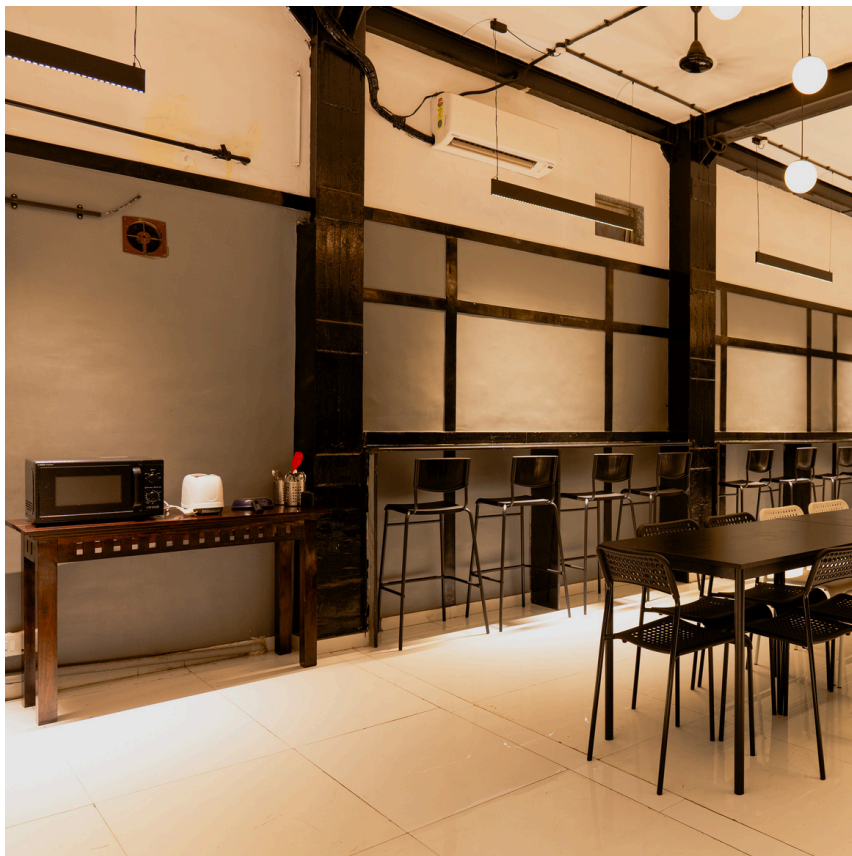
Triple Sharing Room



Quadruple Room



Pantry & Bath



Amenities



Microwave



Cutlery & Crockery



Induction



Water Filter



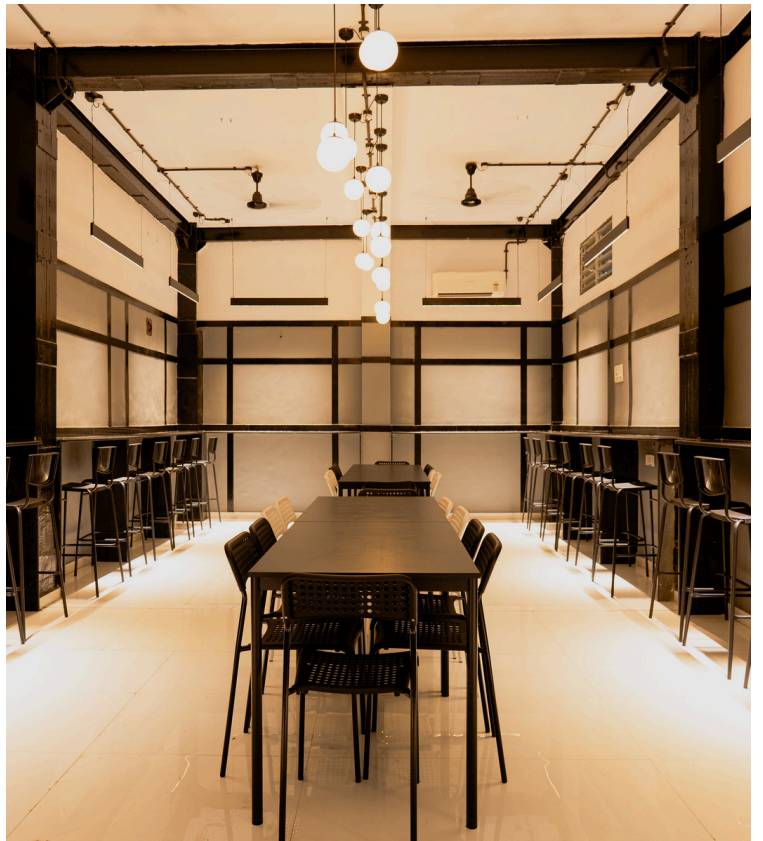
24 x 7 Hot Water

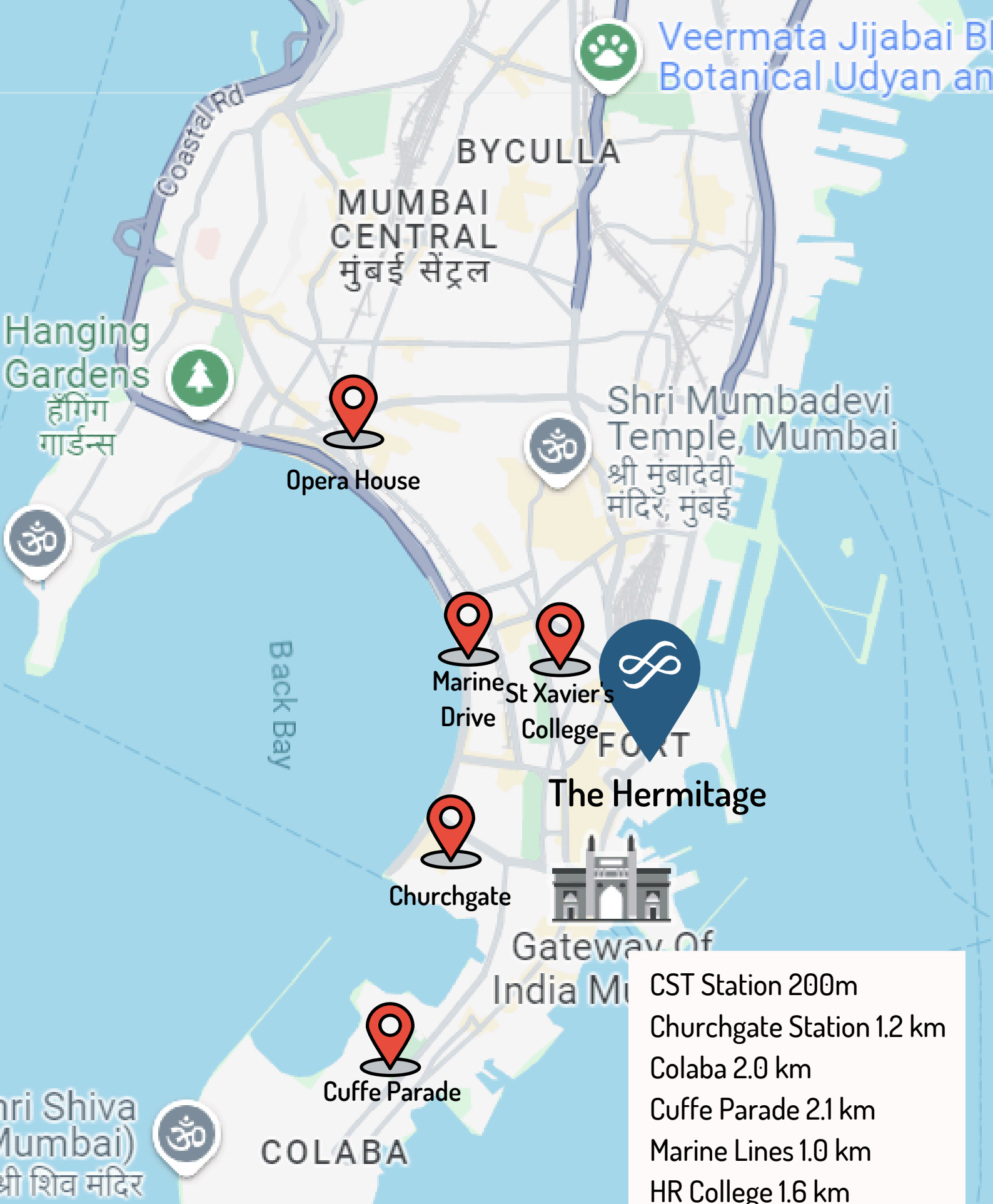


En-suite
Bathroom



Gallery





Veermata Jijabai B
Botanical Udyan an

BYCULLA

MUMBAI
CENTRAL
मुंबई सेंट्रल

Hanging
Gardens
हॅगिंग
गार्डन्स

Opera House

Shri Mumbadevi
Temple, Mumbai
श्री मुंबादेवी
मंदिर, मुंबई

Marine
Drive

St Xavier's
College

FORT

The Hermitage

Churchgate



Gateway Of
India M

Cuffe Parade

COLABA

Shri Shiva
(Mumbai)
श्री शिव मंदिर

CST Station 200m
Churchgate Station 1.2 km
Colaba 2.0 km
Cuffe Parade 2.1 km
Marine Lines 1.0 km
HR College 1.6 km
Jai Hind College 1.4 km
St. Xaviers College 800m
Hinduja College 2.5 km
Bombay Hospital 1.5 km

Our Reviews

One stop for comfort, convenience and worthy cost! 1st choice of students and working professionals having their place of work a minutes away! A working kitchen with all the amenities to look after your hunger and additional discounts on tiffin services. The laundry and cleaning is taken care of. Common living area and terrace to make new friends! Indeed a classic choice to make!!

★★★★★

Livlit is an experience in itself. It's an amazing place and the best part is it's locality, it's just situated in the heart of the city. Marine drive, Gateway...it's just a walk away. To embellish it is delicately maintained and looks exactly how it is shown in the pictures. If you're planning to stay in Mumbai, Livlit is the place for you!!

★★★★★

Excellent place to stay, great vibe. Fantastic location, Good facilities, extremely clean, flexible check-in& out timing & everything you want to experience in the fort area is just walkable. Great option for the ones who want to live and experience the life of a Mumbaikar. Had an amazing stay. Brownie points: You get good company too, I got a couple of friends too!

★★★★★

We've got Featured

sunday
mid-day

ET THE ECONOMIC TIMES

ELLE DECOR

FEMINA Be unstoppable Realty+

MEDIA EXPRESS

sugermint



Tariff

Exclusively for Women

All Inclusive

The Hermitage	Long Stay (11 months)	
Category	One-time	Monthly*
Twin	INR 400,000	INR 40,000
Triple	INR 425,000	INR 42,500
Quadruple	INR 350,000	INR 35,000
Security Deposit	INR 10,000	INR 75,000

*E-Nach mandate registration is compulsory to avail the monthly payment plan

Inclusion in Tariff



Electricity



Wifi



Professional
Laundry



Housekeeping



Breakfast

Monday to Saturday



Beverages



Maintenance



Taxes



Payment Methods

NEFT / RTGS

Account Name: Komal Housing & Leasing

Account No. 001720110001220

IFSC Code: BKID00000017

Bank Name: Bank of India, DN Road

UPI / Credit Cards

You may login to our website www.thelivlit.com

Please note

Payments should not to made to any other personal or business accounts.

If made, it shall be the sole responsibility of the remitter and shall not be acknowledged by The Livlit.

Fort | Prabhadevi | Santacruz (e) | Kurla | Andheri (w) | Navi Mumbai