



LIVLIT

Community Living

Chevron House

Kharghar, Navi Mumbai

The Livlit Experience



We care for the little things — so you can focus on the big ones.

Every Livlit residence is thoughtfully equipped to give you peace of mind, from curated meals and housekeeping to secure access and social spaces. It's everything you need, already included.

Livlit is a place where you can socialise, unwind and live in comfort within a thriving youth community.



Ready to
move-in



Transparent
Policies



Secure
Location

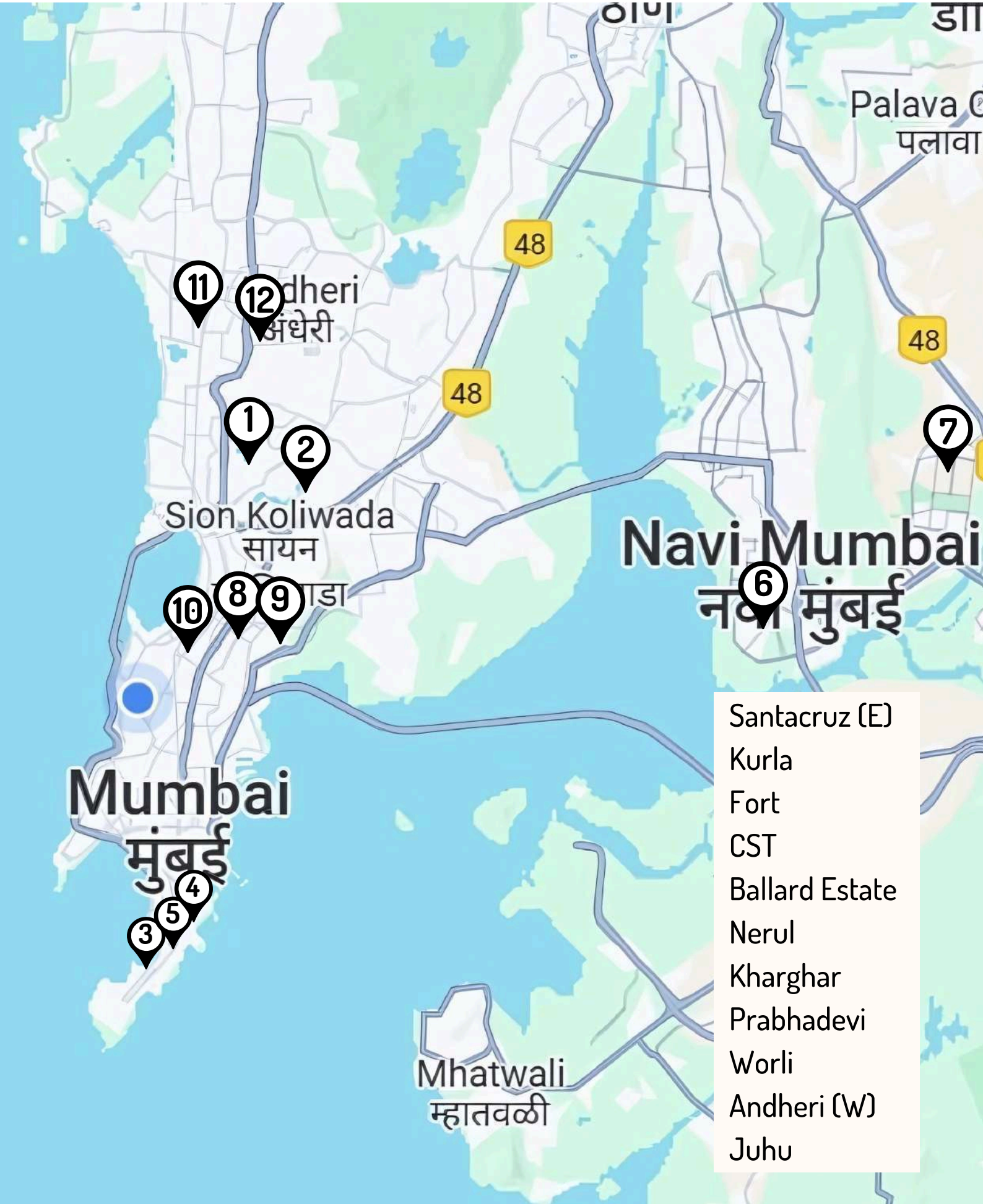


Sense of
Community



Proper
Hygiene

Our Locations



- Santacruz (E)
- Kurla
- Fort
- CST
- Ballard Estate
- Nerul
- Kharghar
- Prabhadevi
- Worli
- Andheri (W)
- Juhu



Chevron House

The Chevron House by Livlit is a sleek 7-story residence offering an in-house gym, shared living spaces, and a scenic rooftop. It delivers a refined blend of luxury, comfort, and communal living.

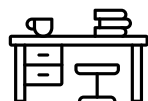
Room Amenities



Bed



Cupboard



Individual Study Table



Air Conditioner



Wifi



Shared living room



Shared Pantry





The Dining Room

Cafeteria

The dining room is a meticulously designed space, providing a refined and sophisticated setting for both intimate dining and distinguished social gatherings.

Amenities



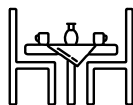
Wifi



CCTV Camera



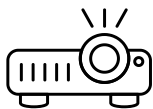
Live Counters



Dinning Table



The Rooftop



Projector



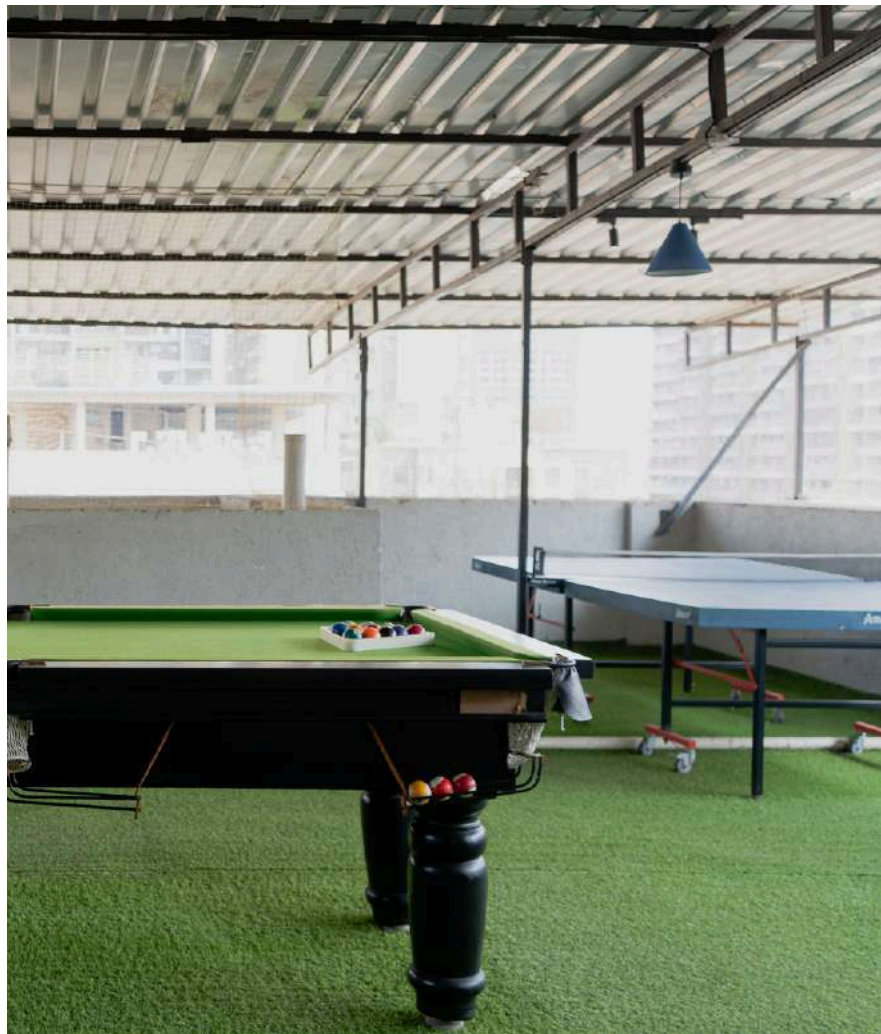
Wifi



Great Views



Games



Gym



Pectoral Press



Bench Press



Treadmill



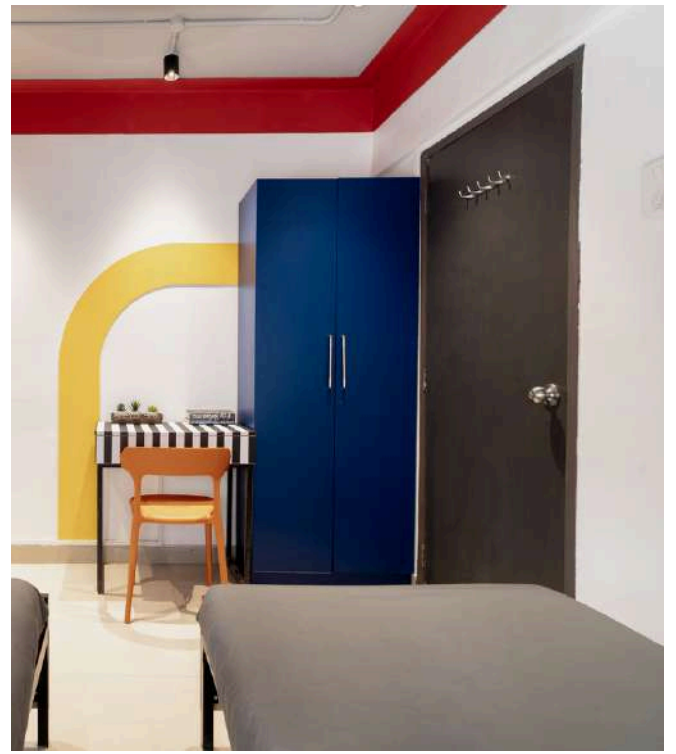
Aerobic Bike





Private Room





Twin Sharing Room





Living Room & Bathroom





Pantry Amenities



Microwave



Cutlery & Crockery



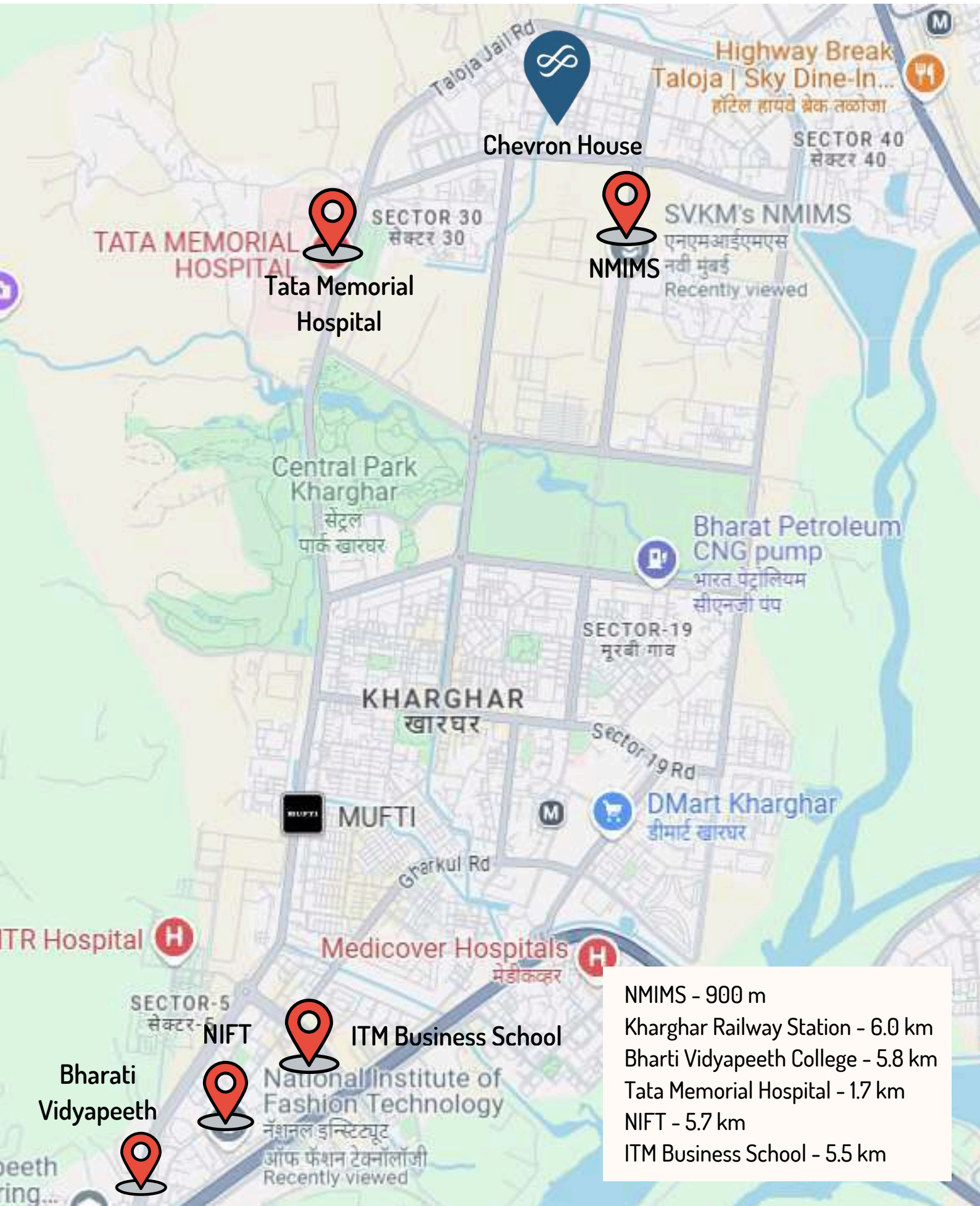
Induction



Water Filter



Our Location



- NMIMS - 900 m
- Kharghar Railway Station - 6.0 km
- Bharti Vidyapeeth College - 5.8 km
- Tata Memorial Hospital - 1.7 km
- NIFT - 5.7 km
- ITM Business School - 5.5 km

Our Reviews

One stop for comfort, convenience and worthy cost! 1st choice of students and working professionals having their place of work a minutes away! A working kitchen with all the amenities to look after your hunger and additional discounts on tiffin services. The laundry and cleaning is taken care of. Common living area and terrace to make new friends! Indeed a classic choice to make!!

★★★★★

Livlit is an experience in itself. It's an amazing place and the best part is it's locality, it's just situated in the heart of the city. Marine drive, Gateway...it's just a walk away. To embellish it is delicately maintained and looks exactly how it is shown in the pictures. If you're planning to stay in Mumbai, Livlit is the place for you!!

★★★★★

Excellent place to stay, great vibe. Fantastic location, Good facilities, extremely clean, flexible check-in& out timing & everything you want to experience in the fort area is just walkable. Great option for the ones who want to live and experience the life of a Mumbaikar. Had an amazing stay. Brownie points: You get good company too, I got a couple of friends too!

★★★★★

We've got Featured

sunday
mid-day

ET THE ECONOMIC TIMES

ELLE DECOR

Realty+

BW BUSINESSWORLD

NEWS 18

FEMINA
Be unstoppable

sugermint

THE NEW
INDIAN
EXPRESS

MEDIA EXPRESS



Tariff

All Inclusive

Chevron House	Long Stay (11 months)	
	One-time	Monthly*
Single	INR 400,000	INR 40,000
Twin	INR 375,000	INR 37,500
Twin <i>lite</i>	INR 350,000	INR 35,000
Security Deposit	INR 25,000	INR 100,000

*E-Nach mandate registration is compulsory to avail the monthly payment plan

Inclusion in Tariff



Electricity
On fair-usage basis



Wifi



**Professional
Laundry**



Housekeeping



Maintenance



Breakfast
Monday to Sunday



**Evening
snacks**



Dinner
Monday to Saturday



Taxes

+91 9769 548 548 +91 9167 548 548
www.thelivlit.com | @thelivlit | hello@thelivlit.com


LIVLIT
Community Living



Payment Methods

NEFT / RTGS / Scan to pay >>>

Account Name: Livlit Community LLP

Account No. 0375209300000111

IFSC Code: PUNB0037520

Bank Name: Punjab National Bank



UPI / Credit Cards

You may login to our website www.thelivlit.com

Please note

Payments should not be made to any other personal or business accounts.

If made, it shall be the sole responsibility of the remitter and shall not be acknowledged by The Livlit.